

## Top Stories This Week

- Piramal, TPG Cap, Baring PE in race to acquire ICICI Home Finance (ET)
- Govt Says April- September Fiscal Deficit At ` 3.79 Lakh Cr. April-September Fiscal Deficit At 68.1% Of FY16 Budget Estimate
- IOC eyes 5-10% stake in Russia's Vankor oilfield
- GAIL Q2 Net Profit At ` 440.5 Cr Vs ` 424.1 Cr (QoQ) Total Income At ` 14,165 Cr Vs ` 12,565 Cr (QoQ)
- Tech Mahindra Q2 Cons Net Profit At ` 785.6 Cr Vs ` 676.1 Cr (QoQ). Cons Dollar Revenue At \$1,011 m Vs \$989 m (QoQ). Cons Rupee Revenue At ` 6615.5 Cr Vs ` 6,293.8 Cr (QoQ)
- Amtek Group looking to sell Barista, its Italian coffee chain as part of plans to exit non-core businesses
- Reliance Infra to shift focus to defence now Gets board nod to exit road and cement businesses.
- Kalyani Group Looking At Supplying Subsystems To Indian Navy & Airforce.
- SBI Q2 net up 25.1 percent to Rs 3,879 crore from Rs 3,100.4 crore (YOY). Net NPA 2.14 Vs 2.73 (YOY).
- Tata Motors Q2 cons loss at Rs. 430 cr vs profit of Rs. 3290 cr (YOY). Cons income Rs. 61318 cr vs Rs. 60641 cr (YOY). One time loss of Rs. 2493 cr.

## Weekly Indices Change

Index	Close	Prev Close	Chg. (%)
SENSEX	26265	26656	-1.47
NIFTY	7954	8065	-1.38
MIDCAP	10826	10974	-1.35
SMLCAP	11052	11315	-2.32
METAL	7153	7307	-2.11
OIL&GAS	9108	9065	0.47
AUTO	18264	18166	0.54
TECK	6096	6115	-0.31
BANKEK	19496	19773	-1.40
IT	11279	11263	0.14
FMCG	7869	7847	0.28
HC	16970	18066	-6.07
PSU	6844	6777	0.99
CD	11767	11872	-0.88
POWER	1878	1917	-2.03
CG	14535	14946	-2.75
REALTY	1345	1371	-1.90

## Global Indices

DOW	17910	17663	1.40
NASDAQ	5147	5053	1.86
FTSE	6353	6361	-0.13
NIKKEI	19265	19083	0.95
HANGSENG	22867	22640	1.00

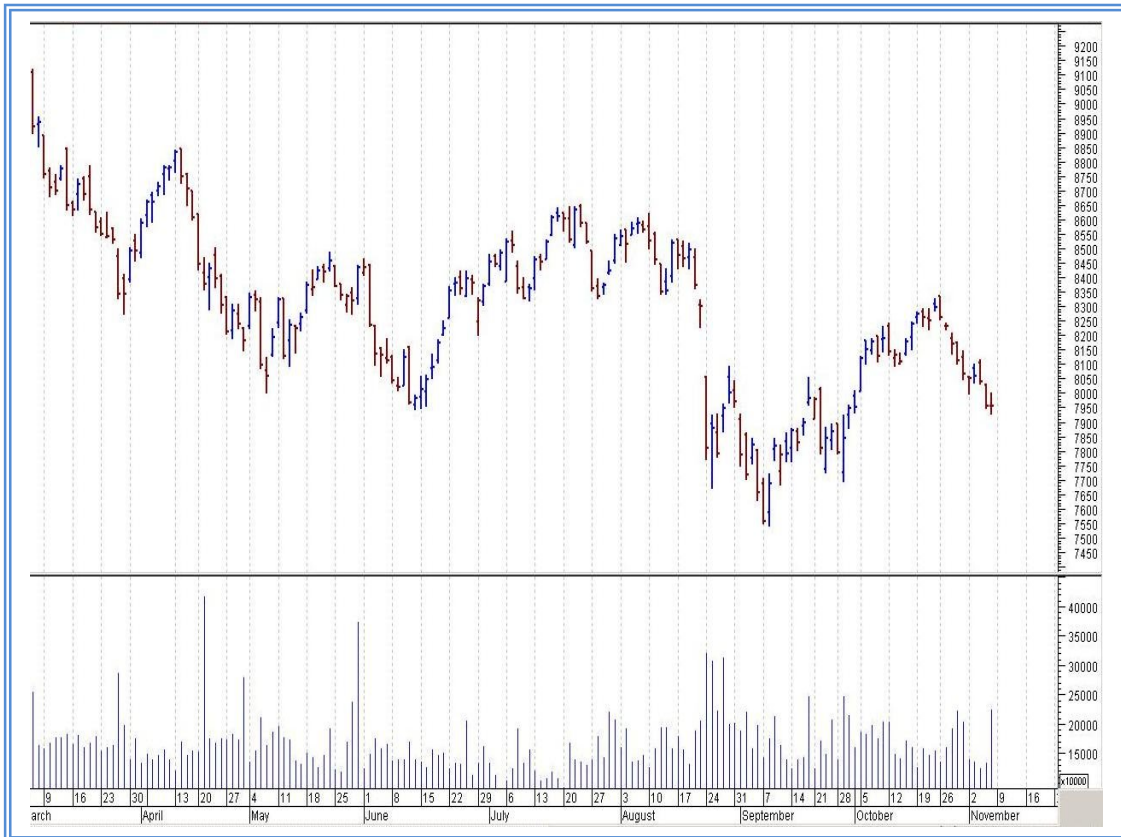
## Top Gainers Weekly

Scrip	Price	% Chg
G M Breweries Ltd.	755.00	21.07
Amrutanjan Health	486.45	13.62
Dishman Pharma	387.30	11.69
Navkar Corporation	178.00	11.49
Atul Ltd.	1725.95	10.36

## Top Losers Weekly

Scrip	Price	% Chg
ABG Shipyard	92.95	28.33
Eros International	275.00	20.38
Central Bank	69.30	17.94
Den Networks Ltd.	99.00	15.46
Adlabs Entertainment	106.95	14.44

## Nifty Corner



Support & Resistance						
S3	S2	S1	Nifty	R1	R2	R3
7750	7800	7900	7954	8000	8050	8150
Moving Averages						
20DMA	50DMA	100DMA	200DMA			
8175	8015	8205	8375			

## Market Commentary

Post result fall in index pivotal pulled the key benchmark indices lower in the week ended Friday, 6 November 2015 with the CNX Nifty settling below the psychological 8,000 mark. The Sensex and Nifty, both, hit their lowest closing level in more than five weeks. Key indices edged lower in four out of five trading sessions during the week. In the week ended Friday, 6 November 2015, the 30-share S&P BSE Sensex lost 391.59 points or 1.47% to settle at 26,265.24, its lowest closing level since 1 October 2015. The 50-unit CNX Nifty lost 111.50 points or 1.38% to settle at 7,954.30, its lowest closing level since 1 October 2015. For the next week Nifty likely to trade in the range between 8050 – 8150 in the upper side and 7900 - 7800 in the lower side.

Stocks at 52 wk High

Scrip	Cmp
GM Breweries	755.00
Hindustan Media	278.35
Harita Seating	390.55
Navkar Corp	178.00
Sterling Tools	433.95

Stocks at 52 wk Low

Scrip	Cmp
Allahabad Bank	74.50
BHEL	191.45
DCB Bank	83.15
Havells India	241.80
Idea Cellular	139.30

FII Activity

Date	Figures in crore
02/11	-272.67
03/11	-449.84
04/11	33.16
05/11	-991.87
06/11	219.17
NET	-1462.05

DII Activity

Date	Figures in crore
02/11	145.38
03/11	350.31
04/11	-74.90
05/11	636.15
06/11	-39.45
NET	1017.49

Weekly Stock Idea

Scrip	B/S	Cmp	Tgt
BANKINDIA	B	134	145
TITAN	B	350	365
COALINDIA	B	342	355
PIPAPAVDOC	B	58	65
HITACHIHOME	B	1352	1395

Buy on dips & Sell on rise with Stop-loss of 3%

Volume Breakout Stocks

Scrip	Cmp
Bank of Baroda	167.05
Sanghvi Movers	330.85
Dr Reddys Labs	3630.65
IDFC	55.45
PNB	132.90

Week Ahead

MAJOR RESULTS/AGM MEETING THIS WEEK:

09 NOV: CENTRALBK, TATAPOWER, ROLTA, NHPC, NBCC, MTNL, RECLTD, OIL, HAVELLS, HINDPETRO, BPCL, ALBK, ABIRLANUVO, BANKINDIA,

10 NOV: NCC, NMDC, HINDALCO,

12 NOV: ATLASCYCLE, RCF, NFL,

13 NOV: WOCKPHARMA, TVTODAY, SOBHA, NECLIFE, JINDALSAW, J&KBANK, EVEREADY, GMRINFRA, CESC, COALINDIA

**VISIT US AT: [WWW.INDIRATRADE.COM](http://WWW.INDIRATRADE.COM)**

**Disclaimer**

This report is for private circulation within the Indira Group. This report is strictly confidential and for information of the selected recipient only and may not be altered in any way, transmitted to, copied or distributed, in part or in whole, to any other person or to the media or reproduced in any form. This report should not be construed as an offer or solicitation to buy or sell any securities or any interest in securities. It does not constitute a personal recommendation or take into account the particular investment objectives, financial situations, or any such factor. The information, opinions estimates and forecasts contained here have been obtained from, or are based upon, sources we believe to be reliable, but no representation of warranty, express or implied, is made by us to their accuracy or completeness. Opinions expressed are our current opinions as of the date appearing on this material only and are subject to change without notice.